

# ANNUAL SUMMARY REPORT 2015-2016



**KINGSTON**  
CITY SCHOOL DISTRICT

We Inspire. We Educate. We Graduate.  
*All Students. All of the Time*





The background of the entire slide is a photograph of a large, multi-story school building with a prominent central entrance and a pediment. The building is surrounded by trees with vibrant autumn foliage in shades of yellow, orange, and green. The sky is a clear, bright blue.

# The Teaching & Learning Team

**John J. Voerg, Deputy Superintendent for Teaching & Learning**

Gary Tomczyk Jr, Chief Information Officer

**Wilford LeForestier, Assistant Superintendent for Special Education**

Ms. Beth Lewis-Jackson, Director of Special Education

Mrs. Barbara McGrath, Assistant Director of Special Education

Ms. Angela Sterbenz, Assistant Director of Special Education

**Dr. Stacia P. Felicello, Assistant Superintendent for Elementary Education**

Jennifer Gribbin, Assistant Director of Elementary Math, Science, & Technology  
Jana Conti, Assistant Director of Elementary Humanities

**Mary Beth Bonville, Assistant Superintendent for Secondary Education**

Dr. Alissa Oliveto, Assistant Director of Secondary Math, Science, & Technology  
Dr. Laura Sagan, Assistant Director of Secondary Humanities

# Table of Contents

DEMOGRAPHICS	p. 4-11
NYS GR. 3-8 ELA & MATH	p. 12-16
NYS GR. 4 & 8 SCIENCE	p. 17-20
NYSESLAT(English as a Second Language)	p. 21
ADVANCED PLACEMENT(AP)	p. 22-23
REGENTS	p. 24-28
DUAL CREDIT	p. 29
GRADUATION	p. 30-33
ACCOUNTABILITY	p. 34-36



2015-2016

# WHO WE ARE



We Inspire. We Educate. We Graduate.  
*All Students, All of the Time*

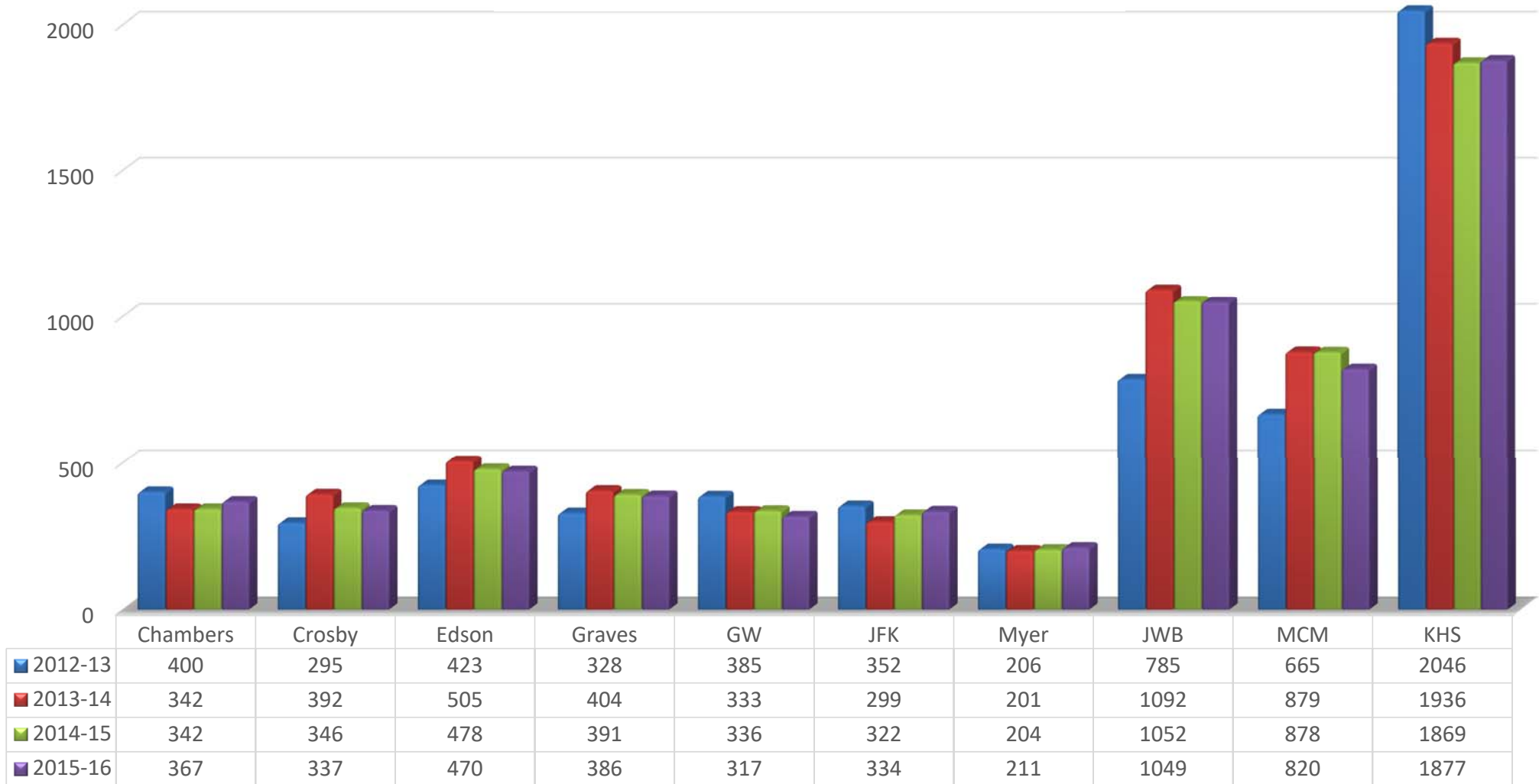
## Demographics

Enrollment	p. 5-6
Racial/Ethnic Distribution	p. 7
Other Subgroups	p. 8
Limited English Proficient	p. 9
Free/Reduced Lunch	p. 10-11

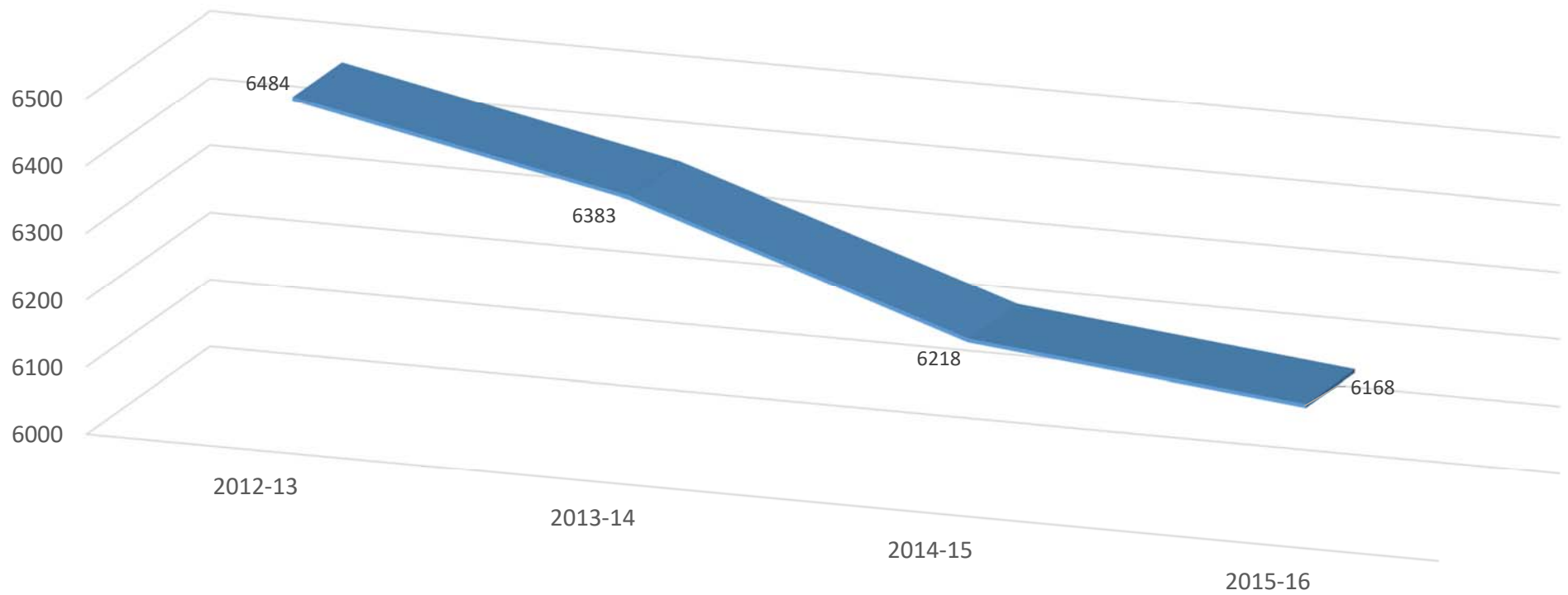
We Inspire



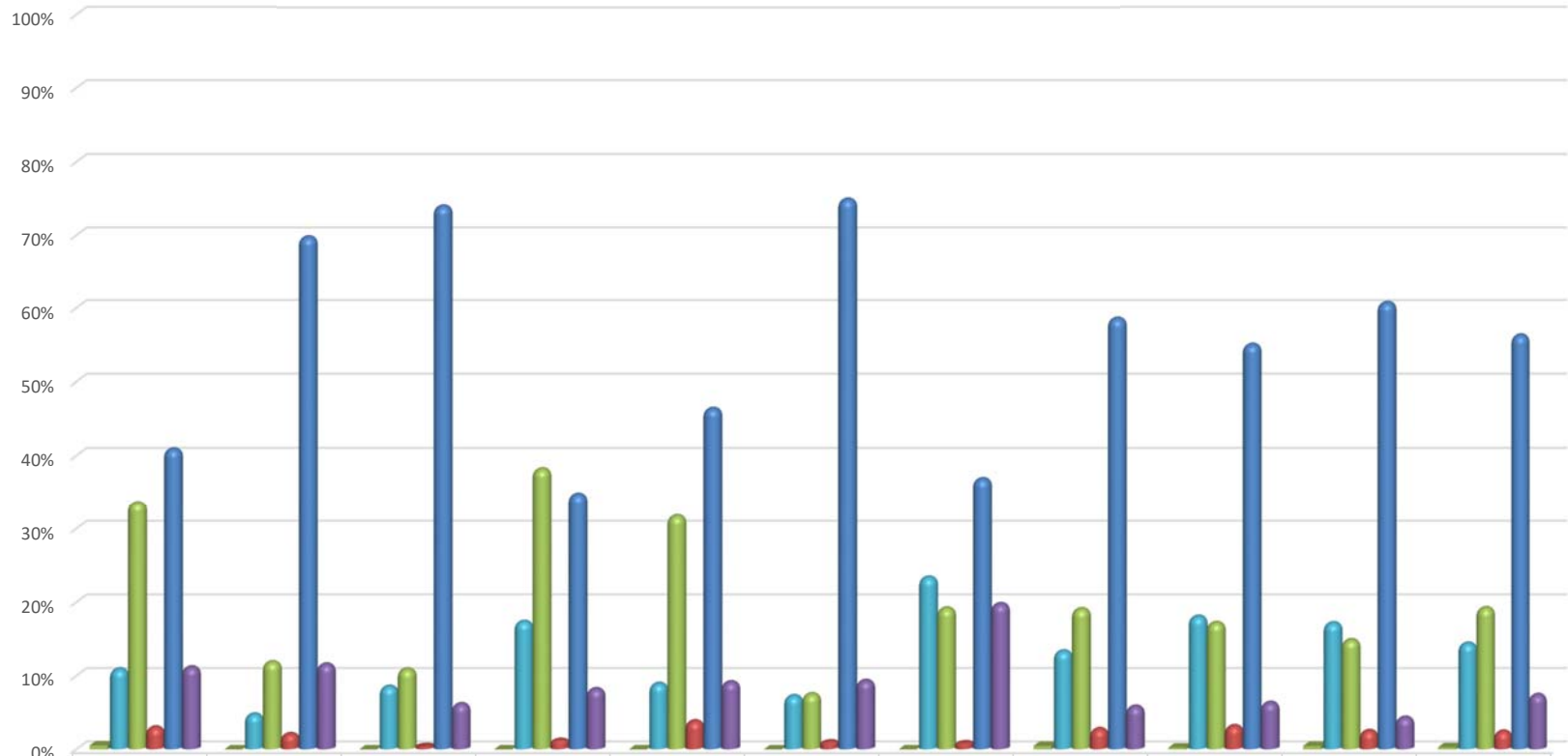
## Building Enrollment - 4 year trend



## District Enrollment

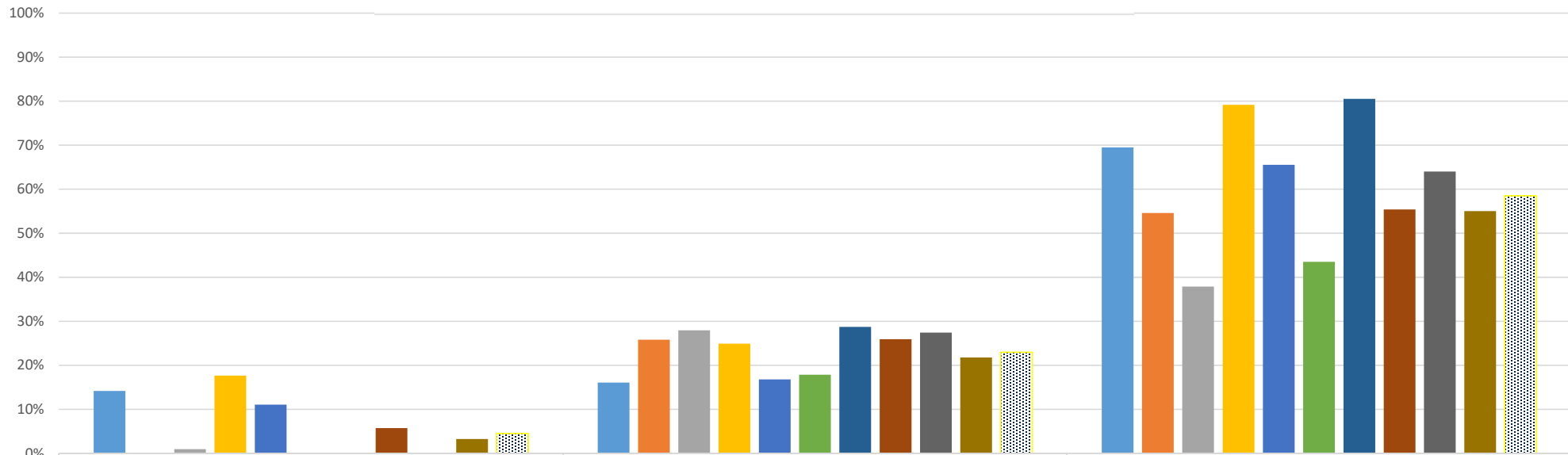


## 2015-16 Racial/Ethnic Distribution by School



	Chambers	Crosby	Myer	GW	Edson	Graves	JFK	JWB	MCM	KHS	District
American Indian or Alaska Native %	1%	0%	0%	0%	0%	0%	0%	0%	0%	0%	0%
Black or African American %	11%	5%	9%	17%	9%	7%	23%	13%	18%	17%	14%
Hispanic or Latino %	34%	12%	11%	38%	32%	8%	19%	19%	17%	15%	19%
Asian or Pacific Islander %	3%	2%	0%	1%	4%	1%	1%	3%	3%	3%	2%
White %	41%	70%	74%	35%	46%	75%	37%	59%	55%	61%	56%
Multiracial %	11%	12%	6%	8%	9%	9%	20%	6%	6%	4%	7%

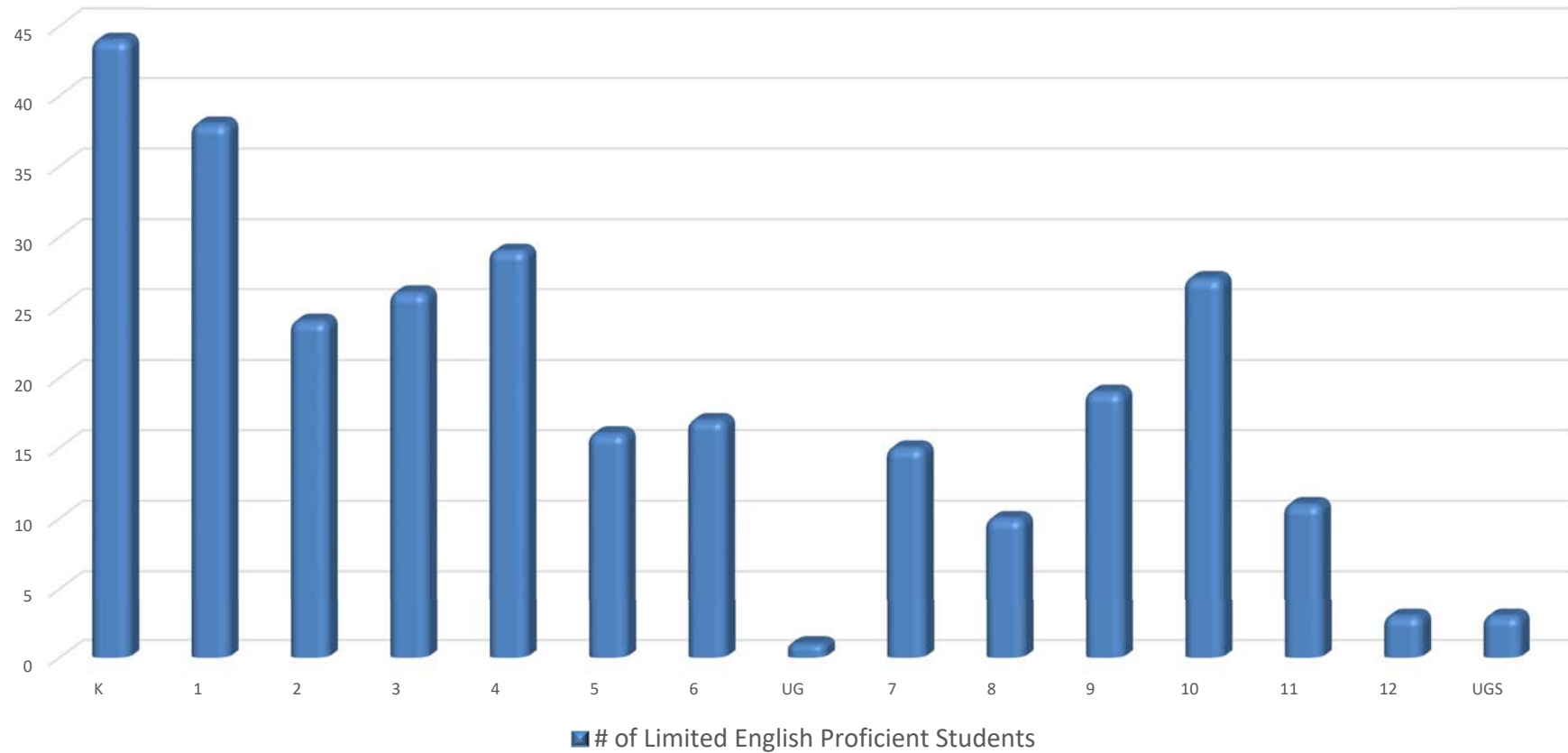
## 2015-16 Other Accountability Subgroups



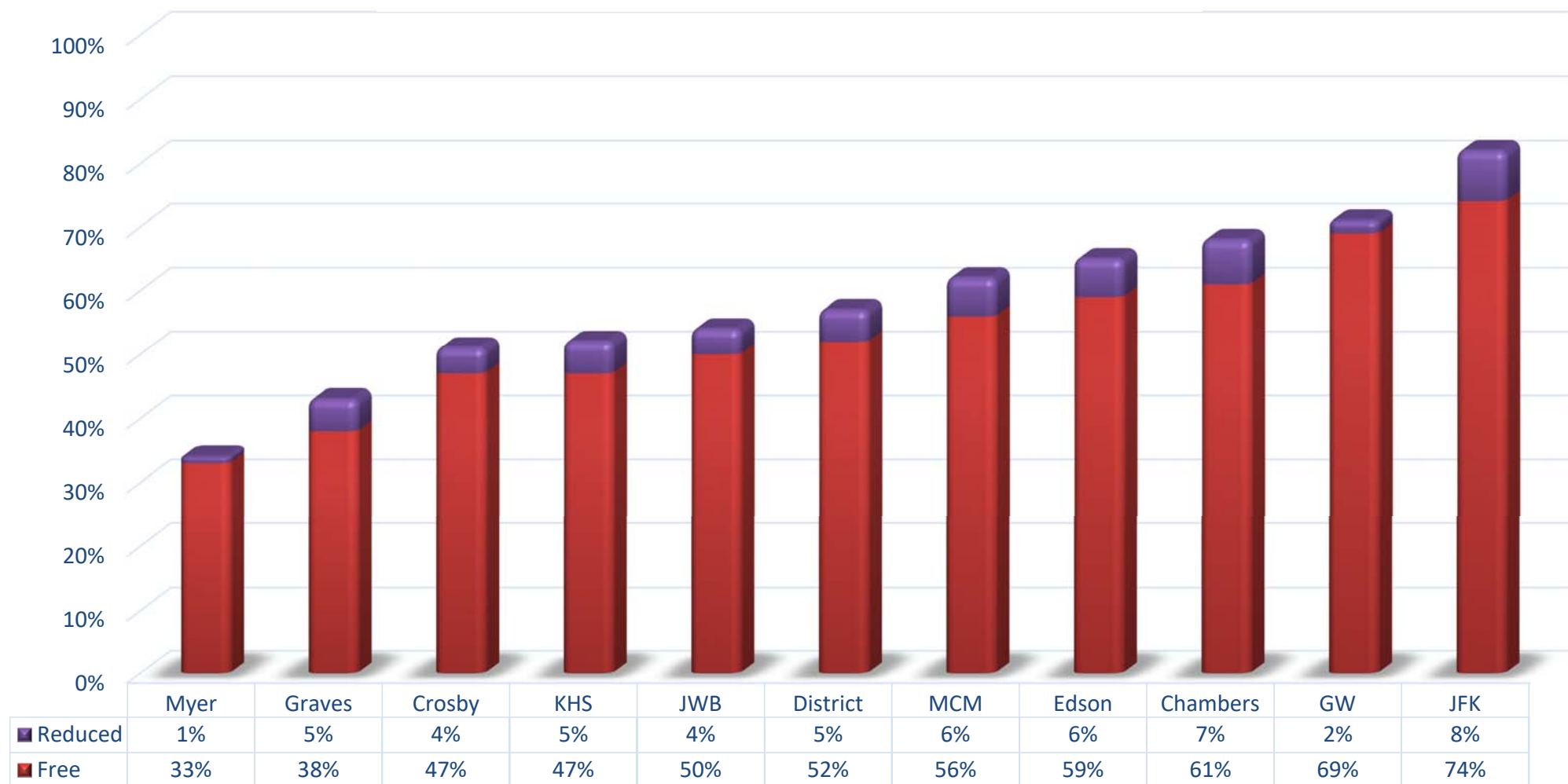
	Limited English Proficient Students	Students with Disabilities	Economically Disadvantaged Students
Chambers	14%	16%	69%
Crosby	0%	26%	55%
Myer	1%	28%	38%
GW	18%	25%	79%
Edson	11%	17%	66%
Graves	0%	18%	44%
JFK	0%	29%	81%
JWB	6%	26%	55%
MCM	0%	27%	64%
KHS	3%	22%	55%
District	5%	23%	59%



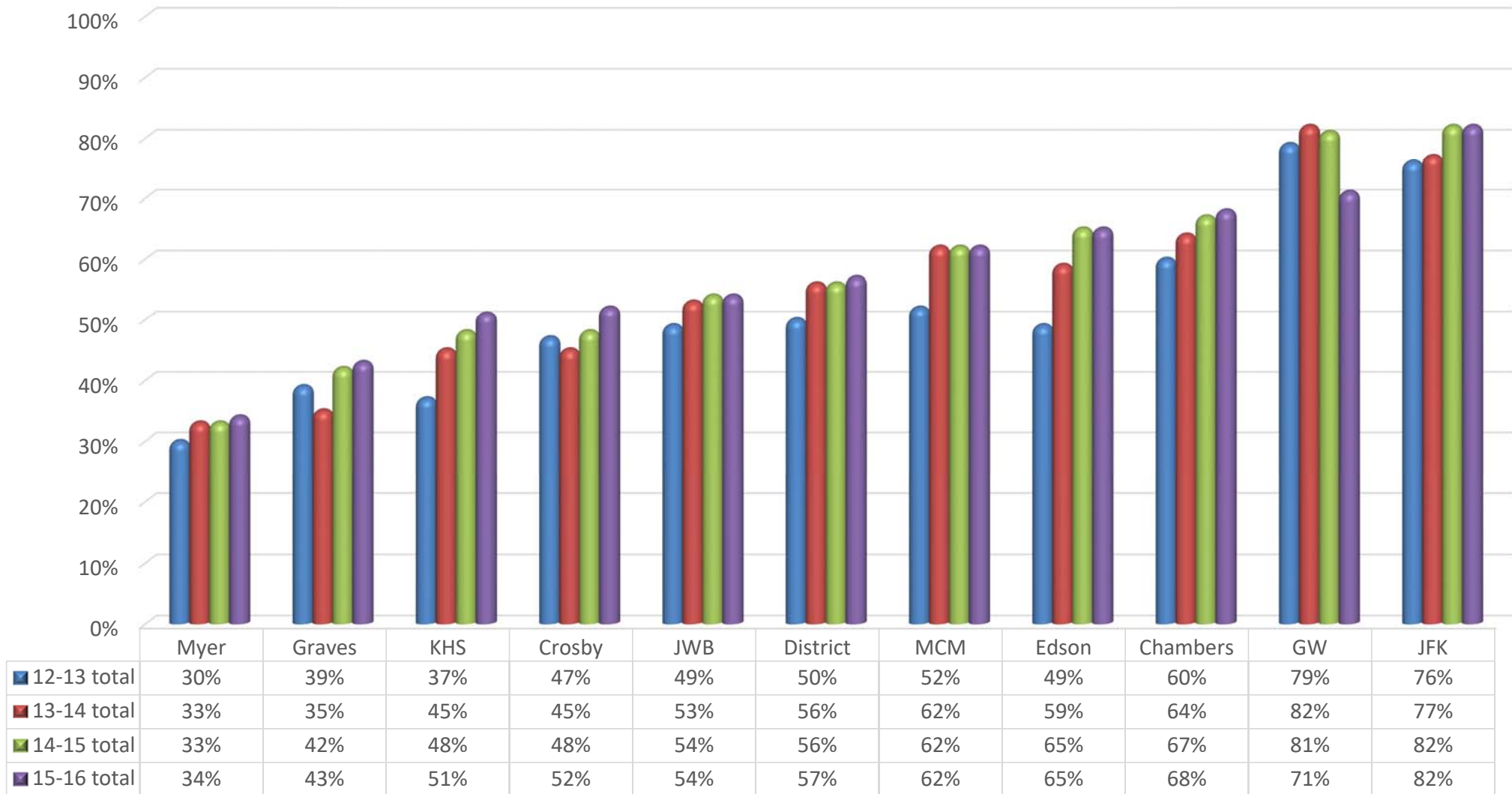
## 2015-16 Grade Distribution Limited English Proficient subgroup



## 2015-16 Free and Reduced Lunch Enrollment Sorted from Low to High Total Enrollment



## Free and Reduced Lunch Eligibility--4 year trend





2015-2016

# HOW WE PERFORM



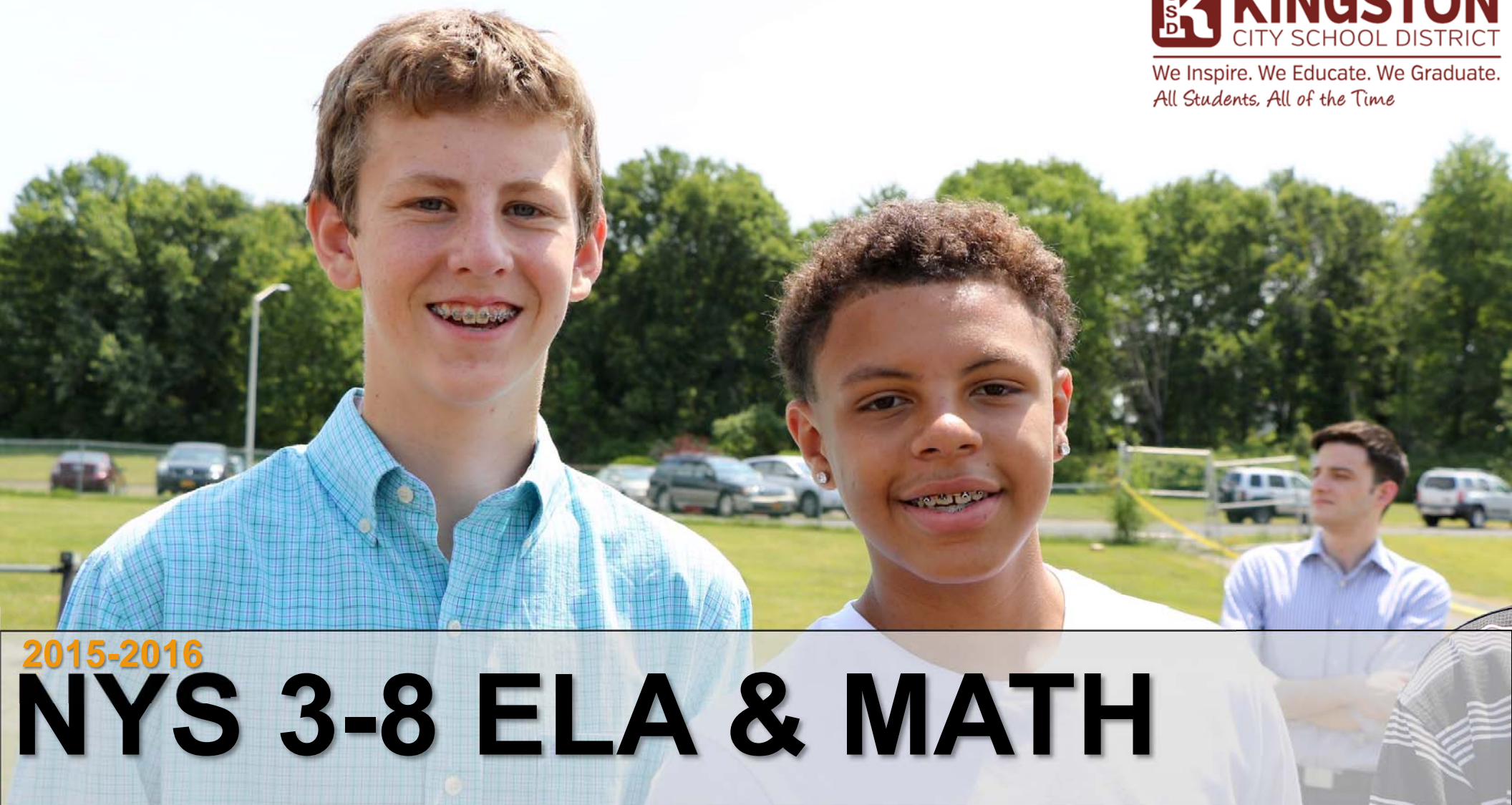
We Inspire. We Educate. We Graduate.  
*All Students, All of the Time*

NYS ELA/Math	p. 13-16
NYS Science	p. 17-20
NYSESLAT	p. 21
AP Exams	p. 22-23
Regents	p. 24-28
Dual Credit	p. 29
Graduation	p. 30-33
Accountability	p. 34-35

We Educate



We Inspire. We Educate. We Graduate.  
*All Students, All of the Time*



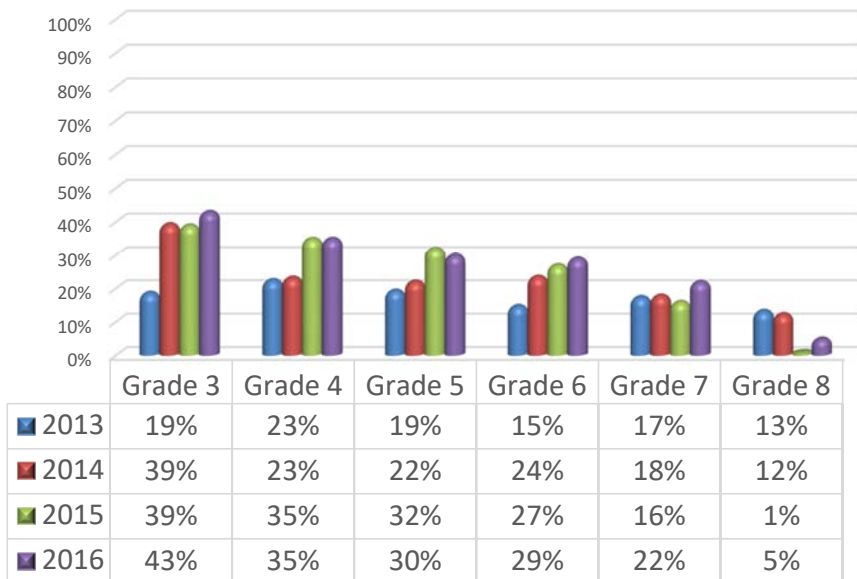
2015-2016

**NYS 3-8 ELA & MATH**

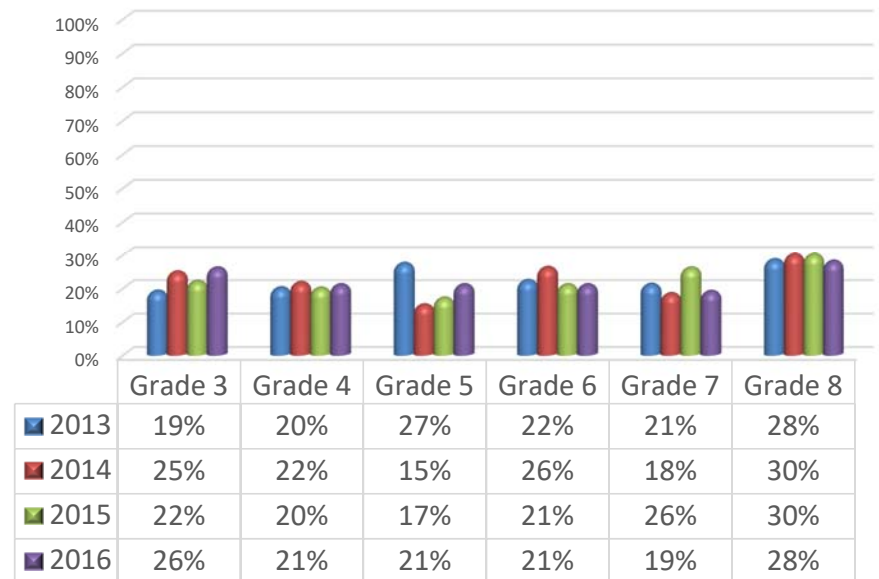


# 4-Year % Proficiency (Levels 3 & 4) by Grade

## NYS Math by Grade



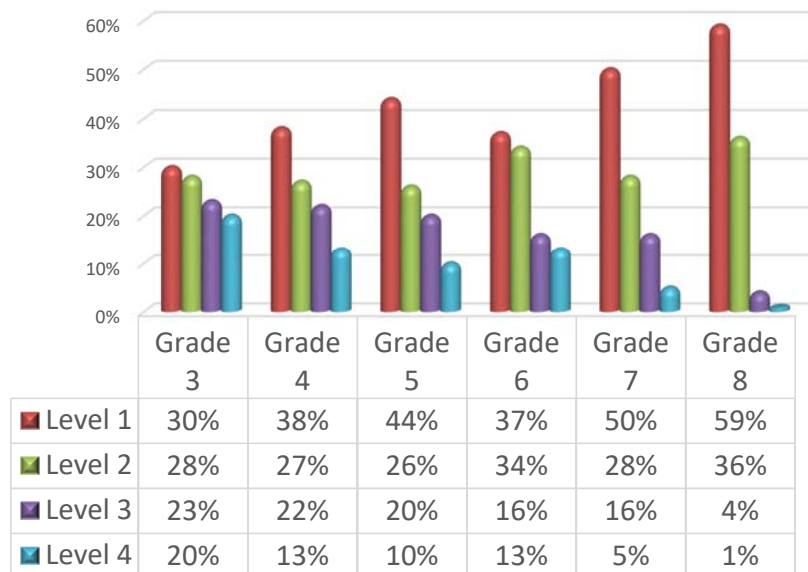
## NYS ELA by Grade



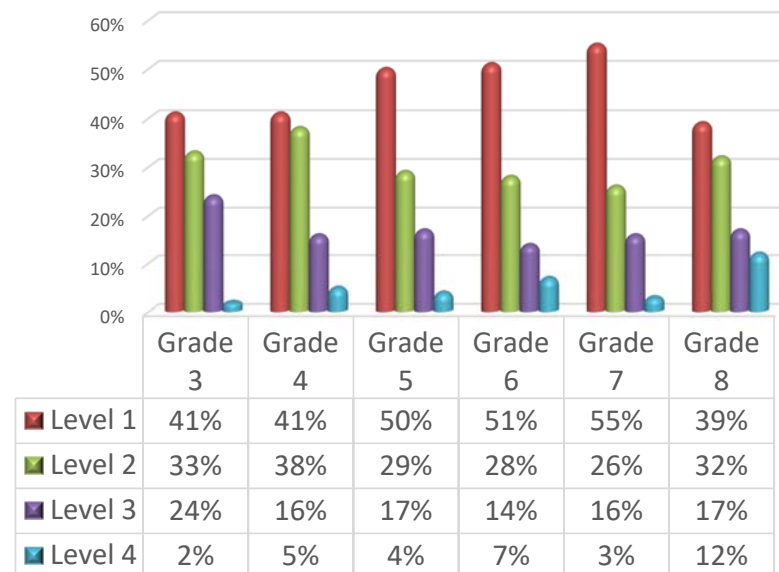


# 2015-16 Grade 3-8 NYS ELA & Math % of students at each performance level

## Grade 3-8 NYS Math



## Grade 3-8 NYS ELA



# NYS Grades 3-8 % Proficient (Levels 3 &4) by Accountability Subgroups – 4 Year Trend

Math				
	2013	2014	2015	2016
All	18%	24%	28%	31%
American Indian/Alaska Native	0%	0%	0%	0%
Asian/Pacific Islander	44%	57%	53%	56%
Black or African American	6%	7%	9%	12%
Economically Disadvantaged	10%	14%	17%	20%
English Language Learners	4%	4%	4%	4%
Hispanic/Latino	7%	12%	17%	19%
Multiracial	18%	26%	26%	37%
SWD	4%	7%	7%	8%
White	23%	30%	37%	39%

ELA				
	2013	2014	2015	2016
All	23%	22%	22%	23%
American Indian/Alaska Native	0%	0%	11%	0%
Asian/Pacific Islander	52%	49%	50%	44%
Black or African American	8%	7%	7%	10%
Economically Disadvantaged	12%	13%	11%	13%
English Language Learners	4%	1%	0%	0%
Hispanic/Latino	13%	11%	8%	12%
Multiracial	27%	21%	19%	21%
SWD	3%	4%	3%	2%
White	28%	29%	31%	30%



We Inspire. We Educate. We Graduate.  
*All Students, All of the Time*

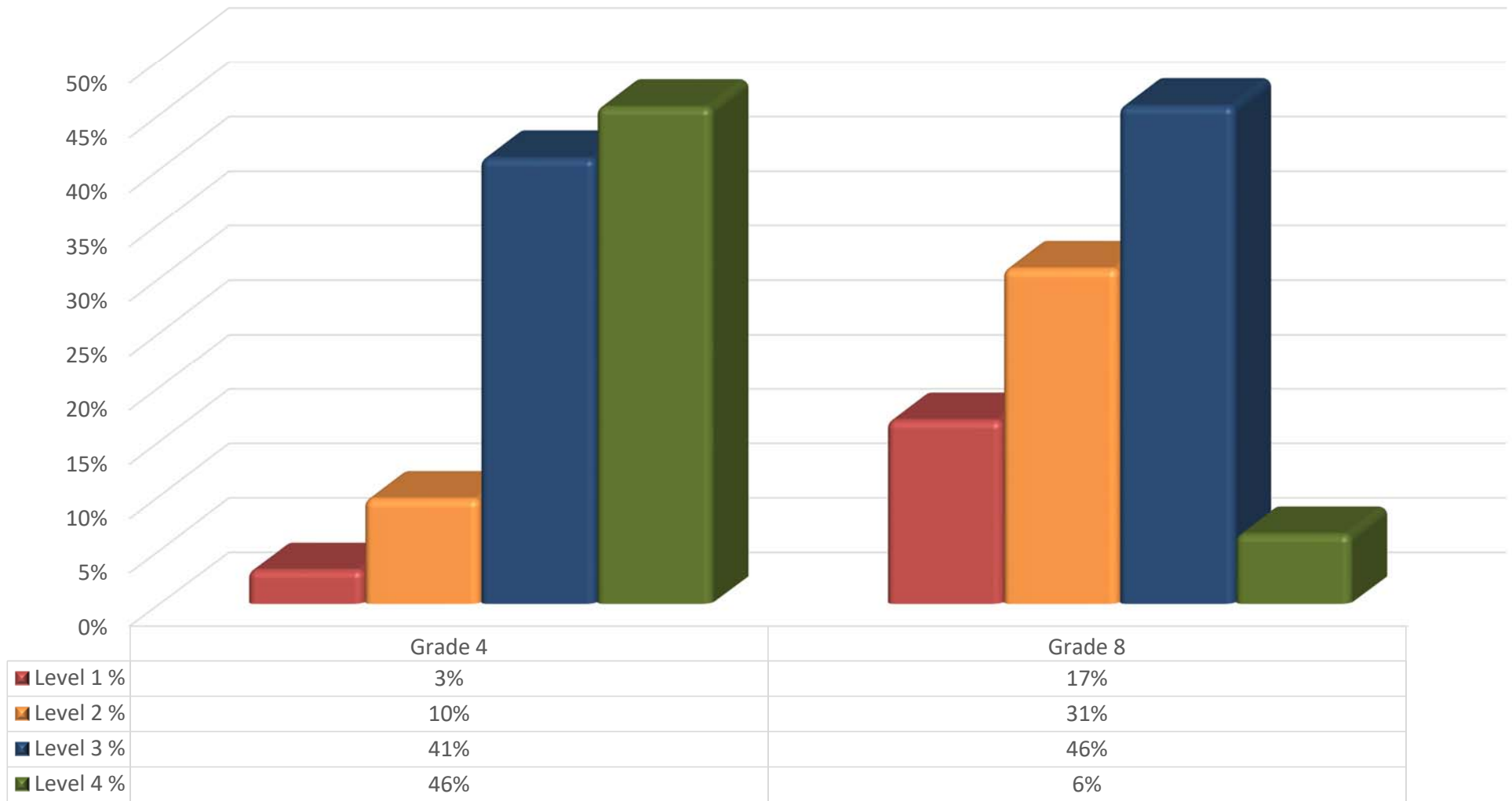


2015-2016

# NYS 4 & 8 SCIENCE



## 2015-16 Grades 4 & 8 NYS Science % of students at each performance level



## NYS Science Grade 4 & 8 4-Year % Proficiency (Levels 3 & 4)



# NYS Science Grades 4 & 8

## % Proficient by Accountability Subgroups – 4 Year Trend

### Grade 4

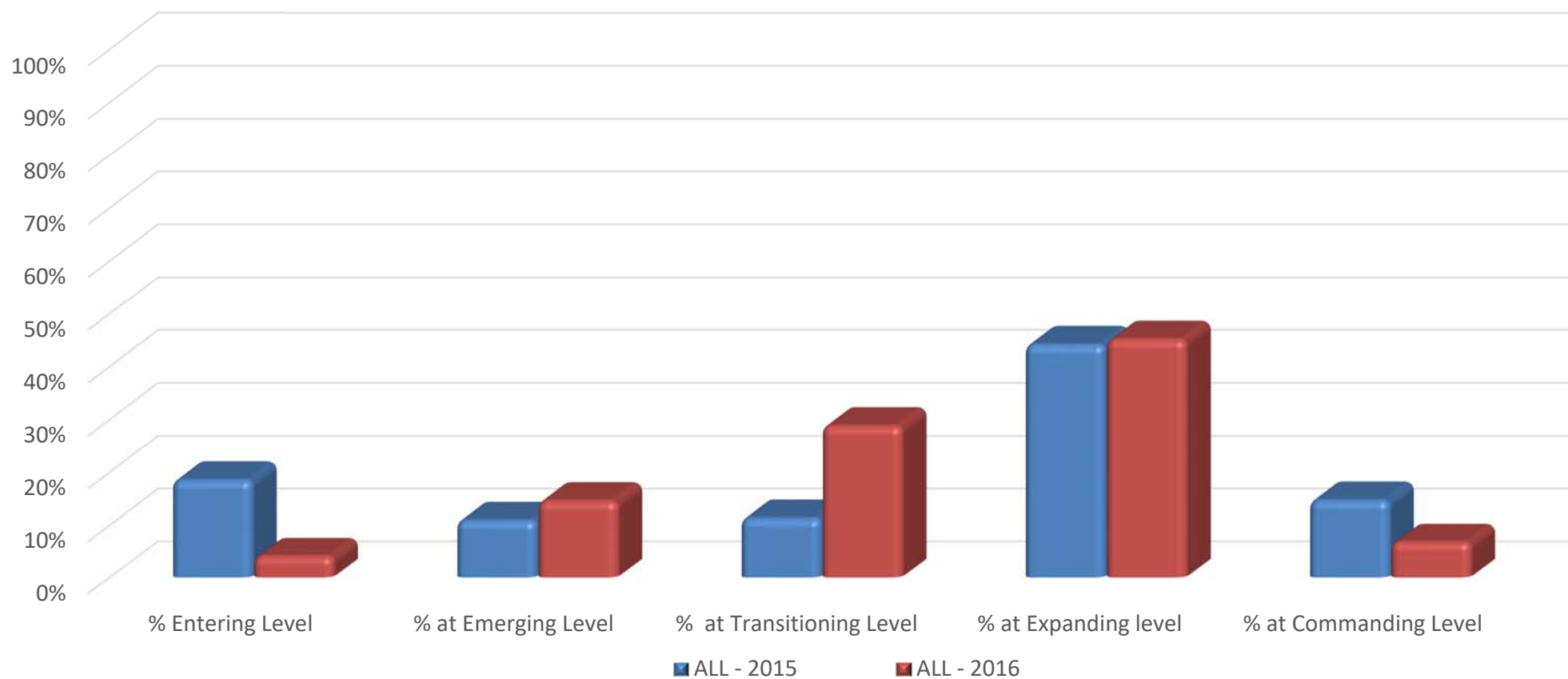
	2013		2014		2015		2016	
	# tested	%	# tested	%	# tested	%	# tested	%
All	491	90%	434	88%	329	84%	381	87%
Black or African American	80	75%	67	81%	53	70%	53	72%
Economically Disadvantaged	264	86%	259	82%	208	77%	237	82%
English Language Learners	23	74%	22	64%	19	53%	24	59%
Hispanic/Latino	79	86%	82	82%	75	76%	78	81%
Multiracial	23	100%	25	84%	21	86%	30	80%
SWD	132	78%	107	72%	84	63%	92	80%
White	298	95%	241	92%	168	91%	211	94%

### Grade 8

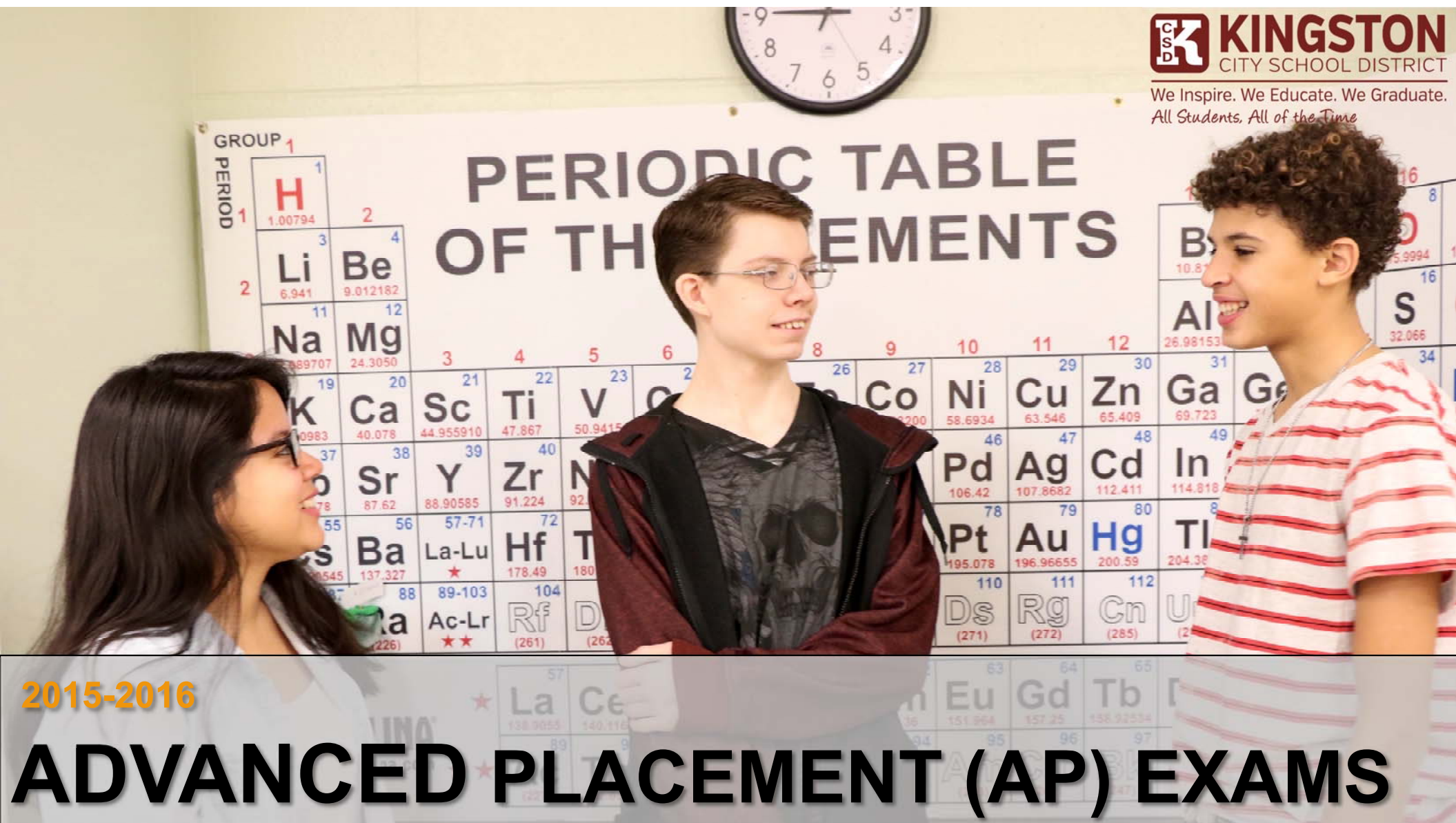
	2013		2014		2015		2016	
	# tested	%	# tested	%	# tested	%	# tested	%
All	337	69%	307	59%	272	53%	201	50%
Black or African American	74	47%	71	38%	56	48%	47	34%
Economically Disadvantaged	189	61%	205	50%	185	45%	136	43%
English Language Learners	5	40%	5	0%	10	10%	9	0%
Hispanic/Latino	49	55%	49	41%	65	45%	39	33%
Multiracial	20	60%	10	60%	12	50%	7	57%
SWD	84	40%	89	37%	74	26%	53	32%
White	184	80%	172	71%	132	59%	101	68%



## New York State English as a Second Language Achievement Test (NYSESLAT) Results K-12



Total of **238** Students in 2015    Total of **295** Students in 2016

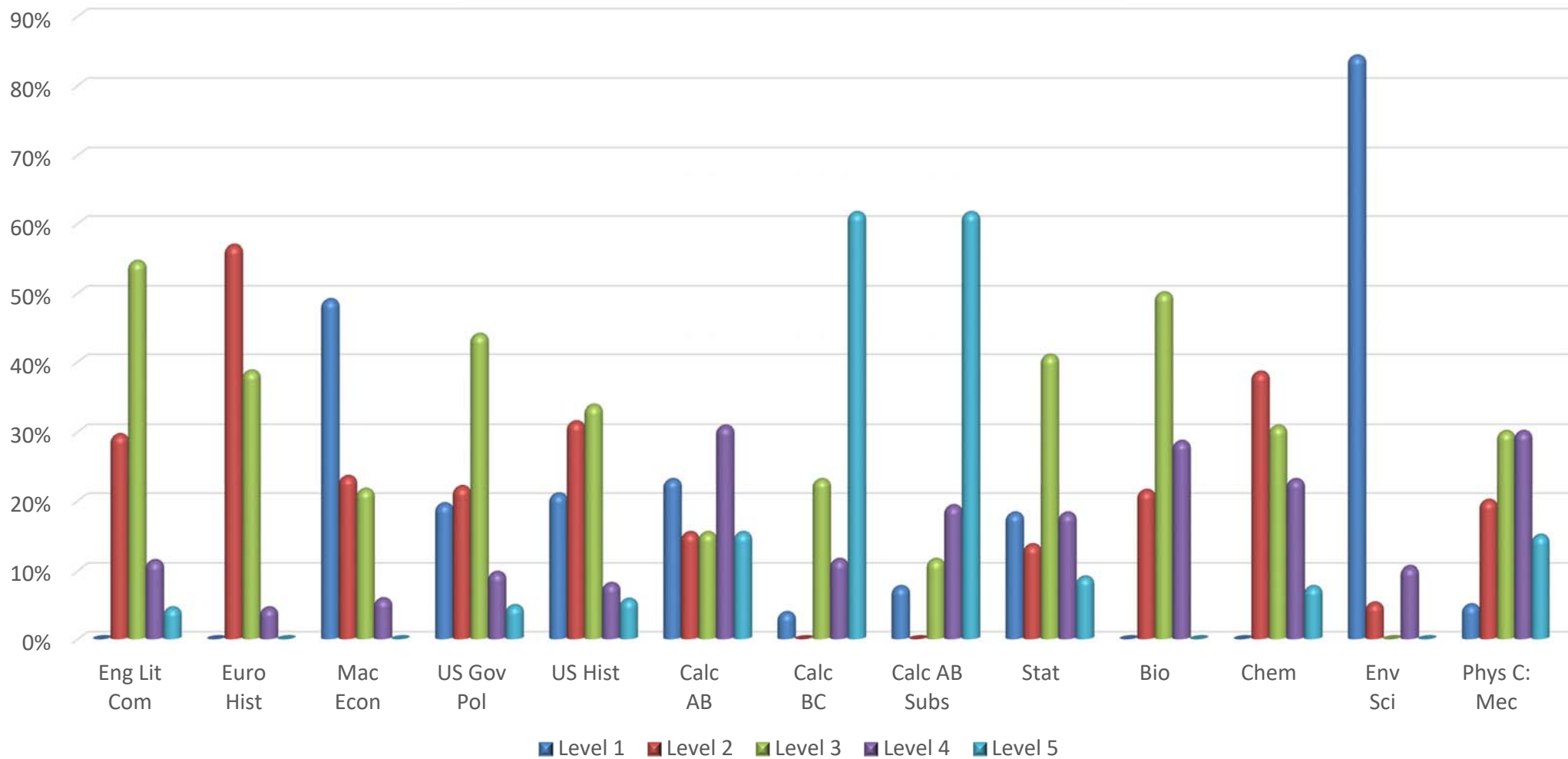


A photograph of three students in a classroom. In the background, a large periodic table of elements is mounted on the wall, with the title "PERIODIC TABLE OF THE ELEMENTS" visible. Above the table is a round analog clock showing approximately 1:50. Three students are in the foreground: a girl on the left with long dark hair and glasses, a boy in the center with short brown hair and glasses wearing a maroon jacket, and a girl on the right with curly brown hair wearing a red and white striped shirt. They are all smiling and looking towards each other. A semi-transparent grey banner is at the bottom of the image.

**2015-2016**

# ADVANCED PLACEMENT (AP) EXAMS

## 2015-16 % at each performance level for AP Exams







We Inspire. We Educate. We Graduate.  
All Students. All of the Time



$$D_r^t \cos \theta - D_r^t \sin \theta (8)$$

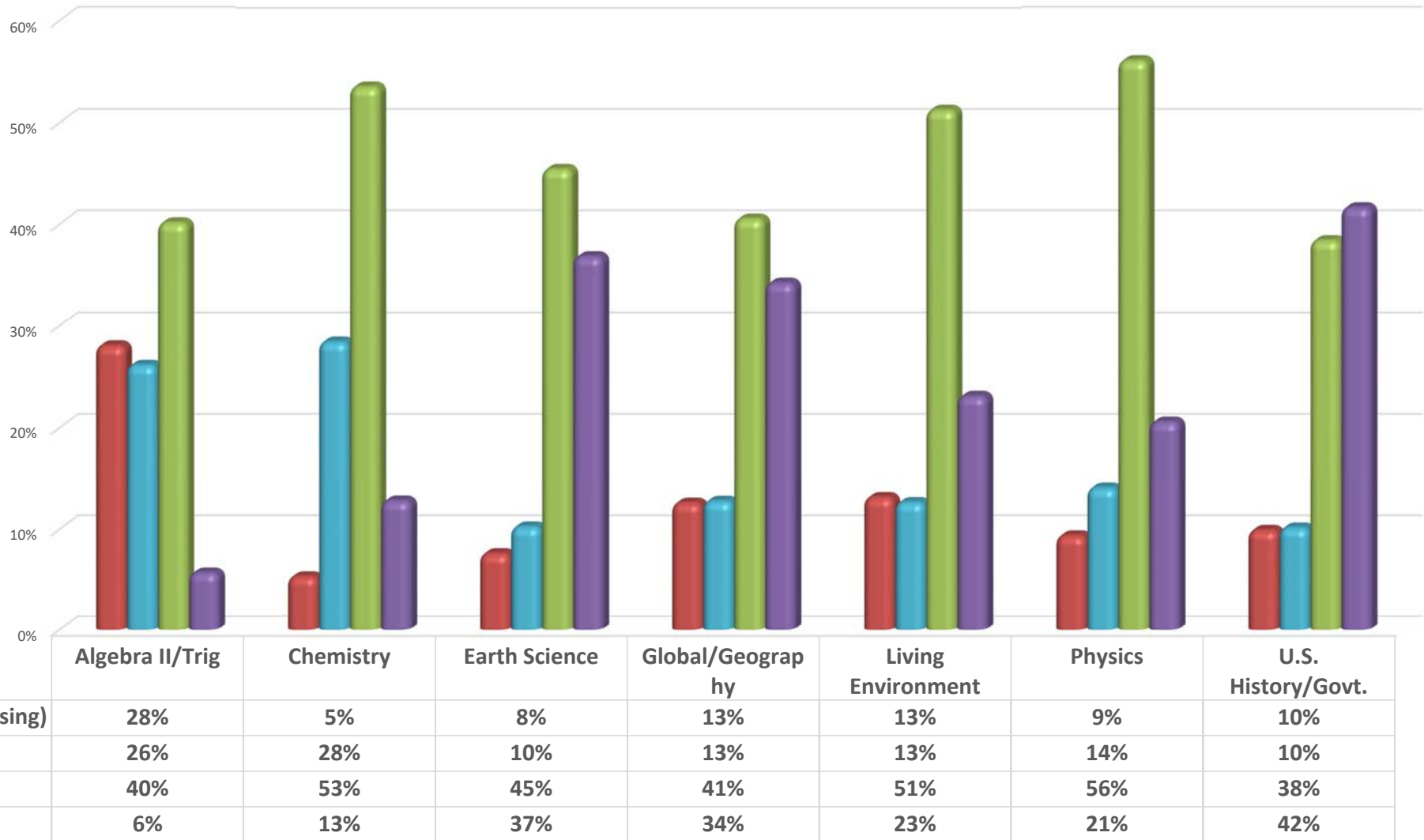
$$E_z + iE_z) + \frac{iB\theta}{c}$$

2015-2016

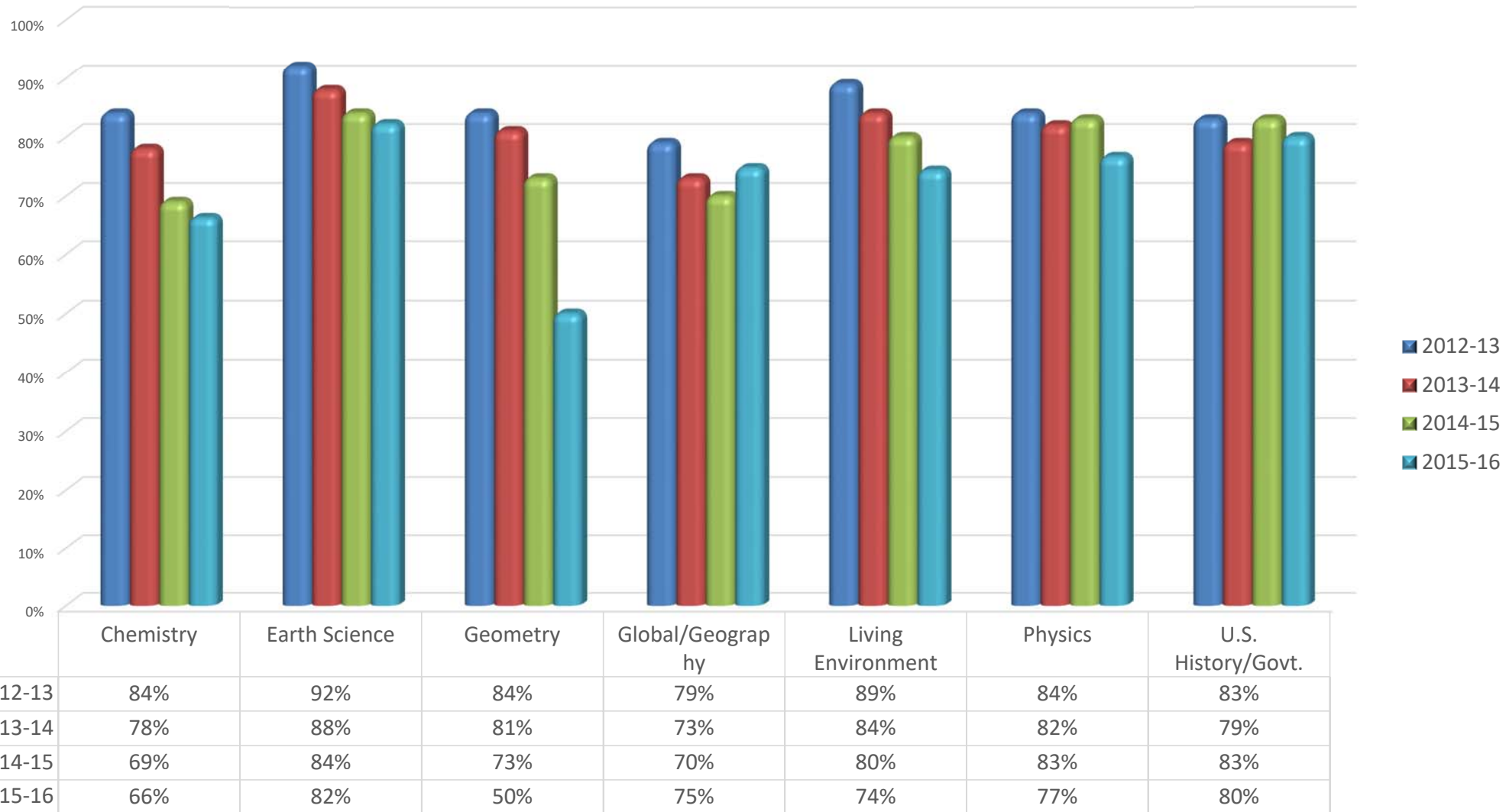
# REGENTS EXAMS



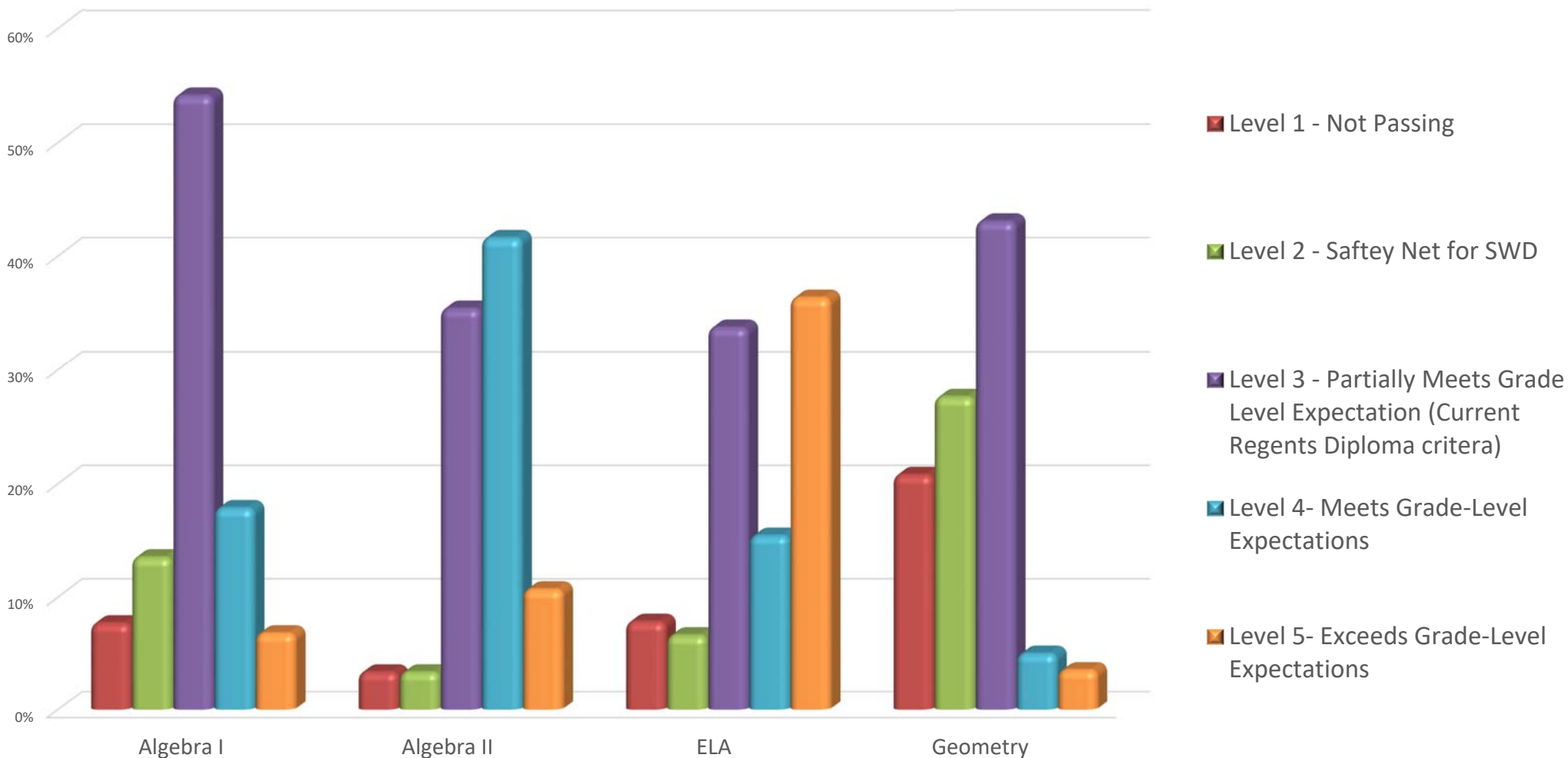
## 2015-16 Traditional Regents Exam Results



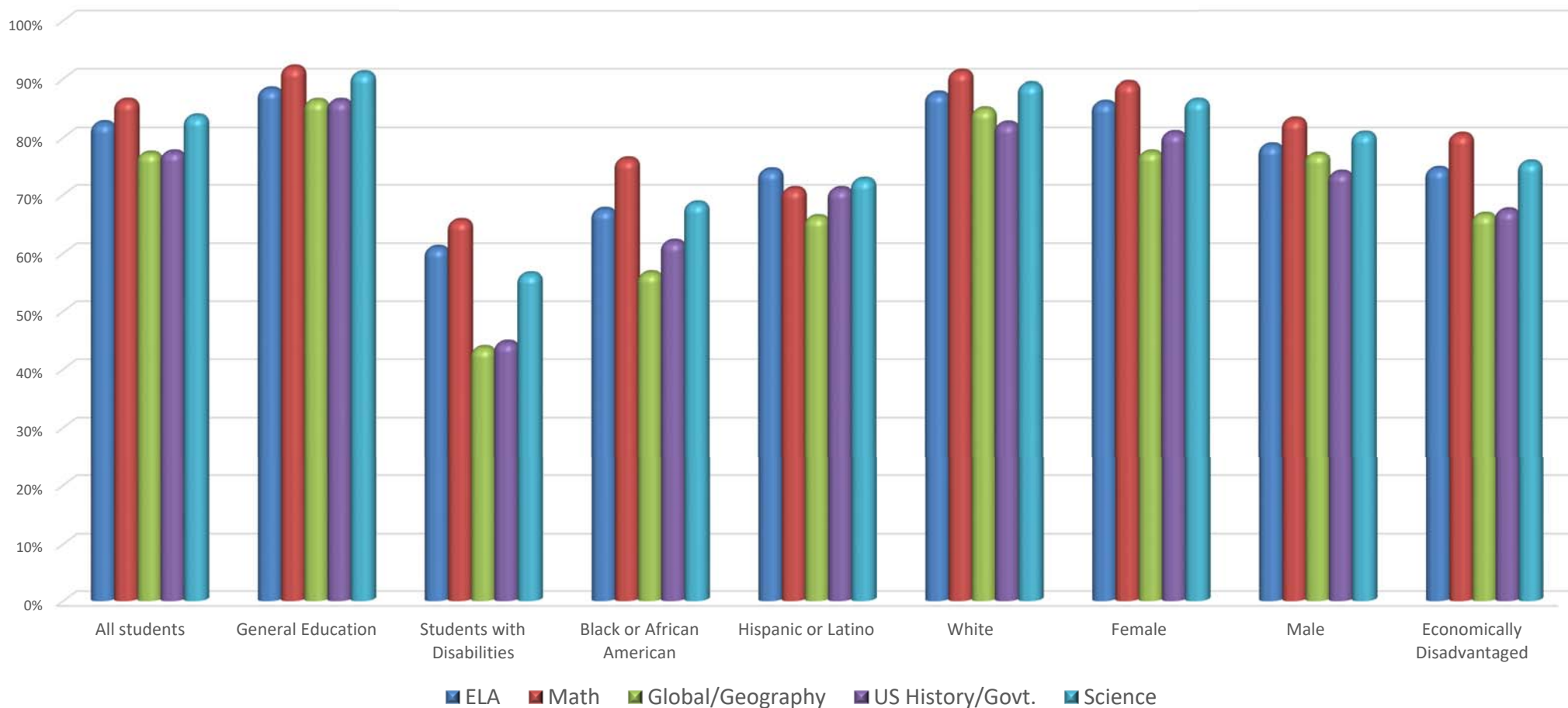
## 4 Year Trend Traditional Regents Scoring 65% or higher



## 2015-16 Common Core Regents Examinations % of students scoring at each performance level



## Total 2012 Cohort % Proficient After Four Years of Instruction\*



\*proficient is defined as scoring Level 3 or above on the Regents exams



# Students Enrolled in College Dual Credit Courses

College Level Courses			
Algebra	Authentic Science Research	Accounting	ELA I
Algebra/Trig	Environmental Biology	Statistics	ELA II
Calculus	Physics	Principles of Management	French 1
Pre-calculus	Physics II	Computer Science	French II
Writing	Science for the Health Professions	Criminal Justice	Spanish I
			Spanish II

Total dual credit seats		
2013-14	2014-15	2015-2016
410	586	671

Partnering Organizations
SUNY Ulster
SUNY Albany
Marist College



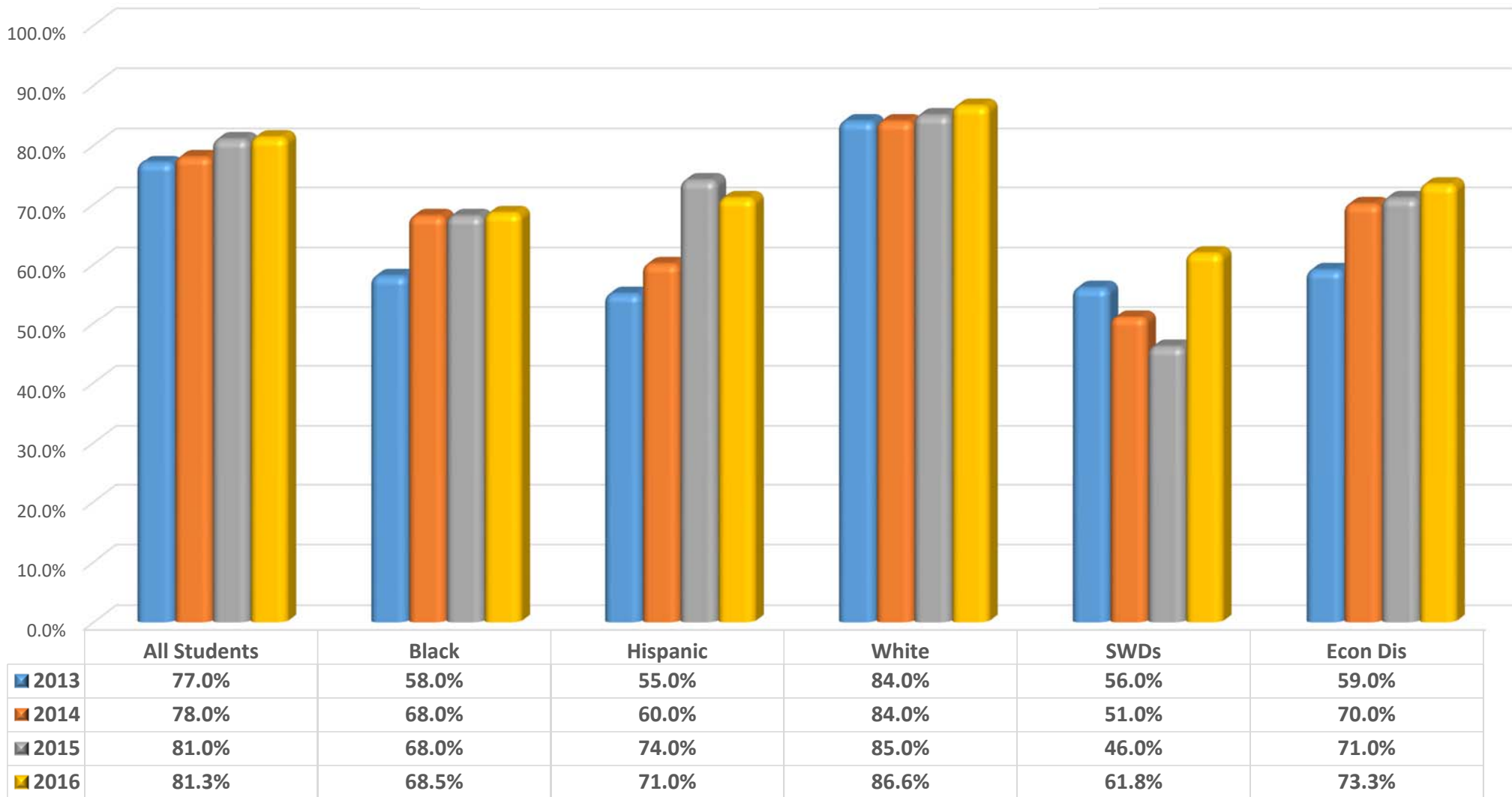
We Inspire. We Educate. We Graduate.  
*All Students, All of the Time*



2015-2016

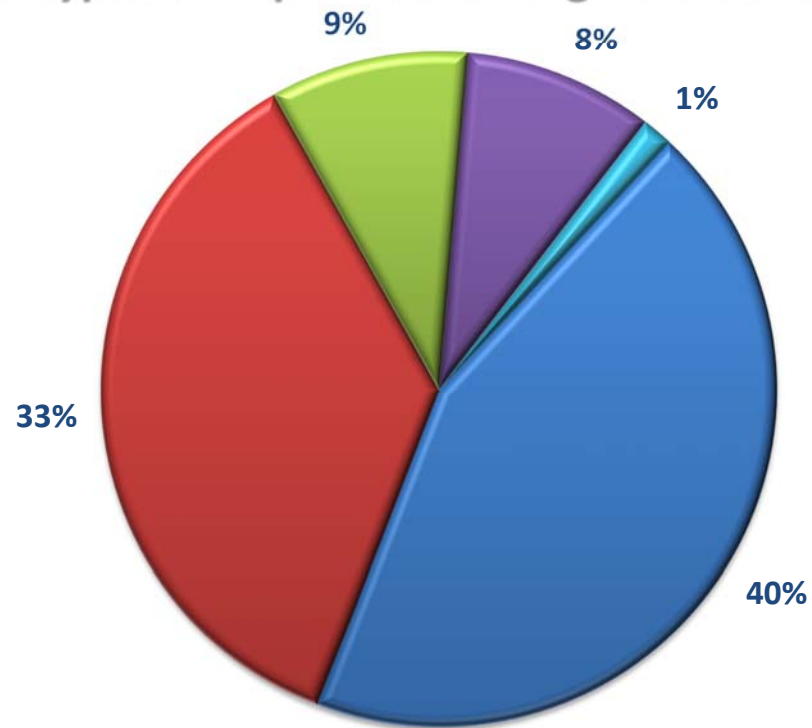
# GRADUATION

## 4-year August Graduation Rate (KCSD)





## 2015-16 Types of Diplomas for High School Completers



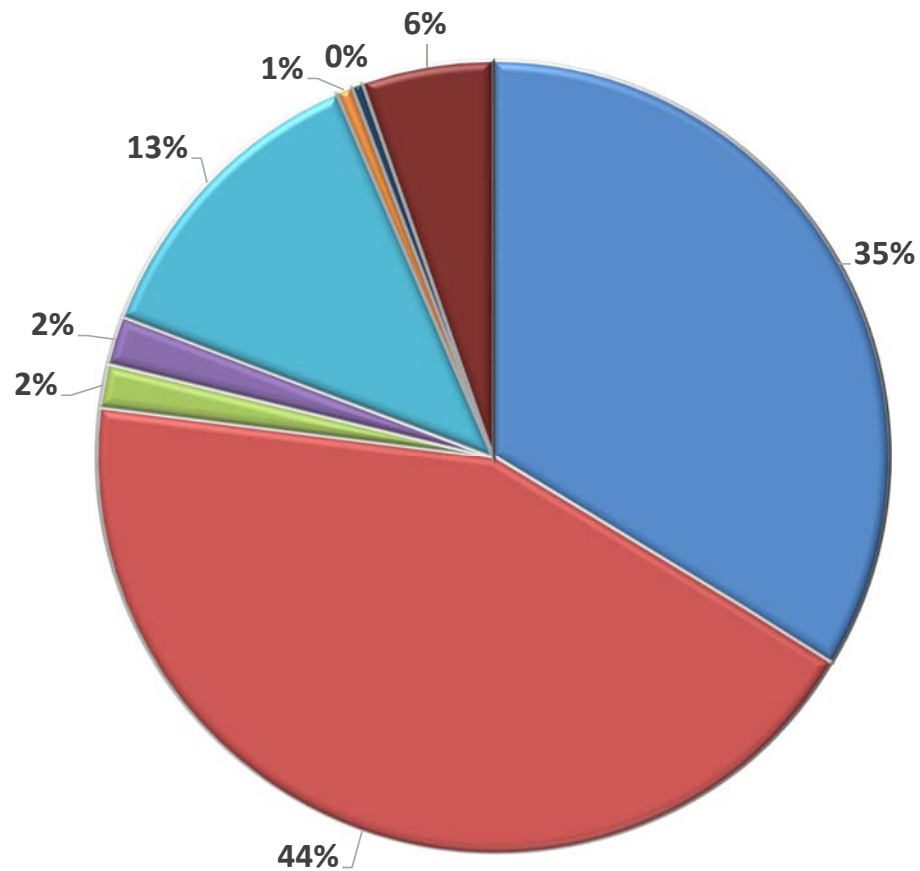
- Regents Diploma (no additional designation)
- Regents with Advanced Designation\*
- Regents with CTE Endorsement\*
- Local Diploma
- Commencement Credentials\*\*

\*included in Regents Diploma counts

\*\*Commencement Credentials became available in 2013-14. Students were previously awarded an IEP Diploma.



## Post-Graduation Plans of 2016 Completers



■ 4 year college

■ 2 year college

■ Other Post-secondary

■ Military

■ Employment

■ Adult Services

■ Other Known Plans

■ Unknown Plan



We Inspire. We Educate. We Graduate.  
All Students. All of the Time

The Commodores  
Sim, Van, D++

\*  
Sav  
\*

All Students, All of the Time

(Ret  
Qui

2015-2016

ACCOUNTABILITY STATUS

# Accountability Status for 2016-17

## 2016-17 Accountability Status Based on 2014-15 Results

KINGSTON CITY SD	Focus District
CHAMBERS SCHOOL	Focus
E R CROSBY ELEMENTARY SCHOOL	Focus
HARRY L EDSON SCHOOL	Good Standing
ROBERT R GRAVES SCHOOL	Good Standing
GEORGE WASHINGTON SCHOOL	Good Standing
JOHN F KENNEDY SCHOOL	Good Standing
ERNEST C MYER SCHOOL	Good Standing
J WATSON BAILEY MIDDLE SCHOOL	Focus
M CLIFFORD MILLER MIDDLE SCHOOL	Focus
KINGSTON HIGH SCHOOL	Good Standing

# KCSD Identified Subgroups for 2016-17 Accountability

Accountability Measure	Identified Subgroup
EM Combined ELA & Math PI based on 2014-15 results	Economically Disadvantaged
2010 Cohort 4 Year Graduation Rate.	Hispanic Students